

EMSCULPT neo[®]

RF & HIFEM+
for Fat & Muscle

2 PROCEDURES IN A
SINGLE TREATMENT



EMSCULPTNEO.COM | #EMSCULPT



MORE for **LESS**

The **one** in Body Shaping

EMSCULPT NEO is the **only non-invasive technology** that **simultaneously uses Radiofrequency and HIFEM+** (high intensity focused electromagnetic field) to **eliminate fat and build muscle**. This results in **more fat reduction and more muscle growth** than any single gold standard product.

PATIENTS UP TO BMI 35

The data shown represent the average results of 3 EMSCULPT NEO's clinical studies.
Results and patient experience may vary.

LESS **-30%**
Fat
on average*

30
minutes

+25% MORE
Muscle
on average*

BEFORE



AFTER **EMSCULPT®**



1 MONTH AFTER THE LAST TREATMENT, COURTESY OF: BTL AESTHETICS

BEFORE



AFTER **EMSCULPT®**

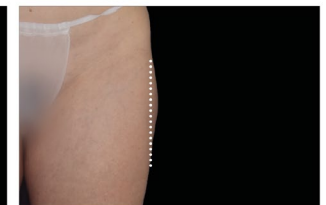


3 MONTHS AFTER THE LAST TREATMENT, COURTESY OF: DAVID KENT, M.D.

BEFORE



AFTER **EMSCULPT®**



1 MONTH AFTER THE LAST TREATMENT, COURTESY OF: YAEL HALAAS, M.D.

MORE for LESS

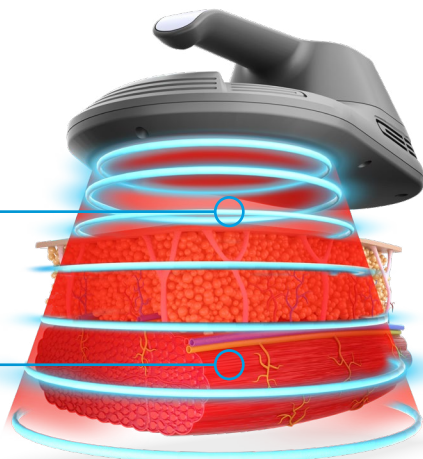
2 TECHNOLOGIES IN 1 APPLICATOR

SYNCHRONIZED RF

The only patented radiofrequency heating in the world that works simultaneously within a magnetic field.

HIFEM+

The #1 muscle sculpting technology with newly designed protocols now operates simultaneously with RF heating.



Biceps

Triceps

Abdomen

Buttocks

Thighs

Calves

Backed by Science

7

New
Clinical
Studies

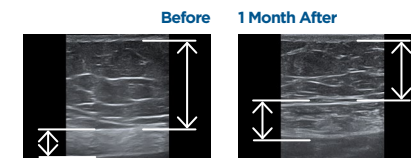
30

HIFEM
Scientific
Publications

EMSCULPT
neo

Ultrasound

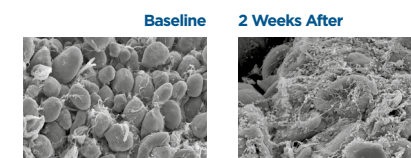
Bruce Katz M.D.



EMSCULPT
neo

Electron Microscopy

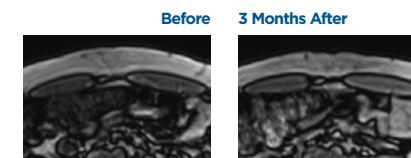
Robert A. Weiss MD FAAD,



EMSCULPT
neo

MRI

Carolyn Jacob M.D.



Fat Breakdown

In less than 4 minutes the temperature in fat reaches levels that cause their permanent damage.

Muscle Warm-Up

The muscle temperature raises by several degrees, similar to what a warm-up activity does before any workout.

Supramaximal Contractions

Muscles in the treated area are contracted at intensities that are not achievable during routine exercise.

After Treatment

The fat cells are slowly removed from the body and the strained muscle fibers initiate a growth process. This results in fat elimination and muscle building.



**Carolyn Jacob
M.D., FAAD**
Dermatologist
Chicago
Illinois

"... EMSculpt Neo is indeed best in market fat reduction and muscle building device combined together."



**Robert Weiss,
M.D., FAAD, F.A.C.Ph**
Dermatologist
Baltimore
Maryland

"... fat reduction and muscle contouring. EMSculpt Neo does both through the same applicator and at the same time..."



**Julene B. Samuels,
M.D.**
Plastic Surgeon
Louisville
Kentucky

"... EMSculpt Neo adds a revolutionary type of RF to HIFEM, resulting in even more fat reduction and increased muscle growth ..."

Results and patient experience may vary. As with any medical procedure, ask your doctor if the EMSculpt Neo® procedure is right for you. EMSculpt Neo® is intended for non-invasive lipolysis (breakdown of fat) of the abdomen and thighs and reduction in circumference of the abdomen and thighs with Skin Type I to Skin Type VI. EMSculpt Neo® is also cleared for improvement of abdominal tone, strengthening of the abdominal muscles and development of firmer abdomen. Strengthening, toning, firming of buttocks, thighs, and calves. Improvement of muscle tone and firmness, for strengthening muscles in arms. ©2021 BTL Group of Companies. All rights reserved. BTL®, EMSculpt Neo® and EMSculpt® are registered trademarks in the United States of America, the European Union, or other countries. The products, the methods of manufacture or the use may be subject to one or more U.S. or foreign patents or pending applications. Trademarks EMSculpt®, EMSculpt Neo®, Emsella®, Emtone®, Embody®, and HIFEM® are parts of EM™ Family of products. *Data on file.