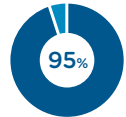


BTL EMSELLA™

SAY NO
TO INCONTINENCE



FDA CLEARED FOR
TREATMENT OF INCONTINENCE



95%
PATIENT
SATISFACTION*



TREATS ENTIRE
PELVIC FLOOR AREA



PATIENTS REMAIN
FULLY CLOTHED

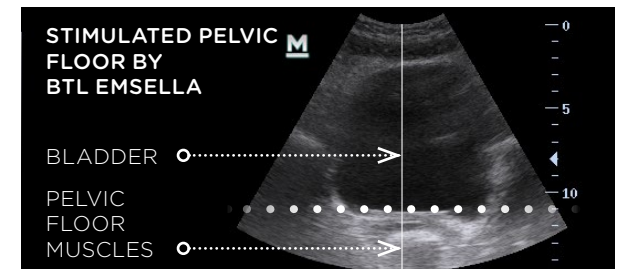
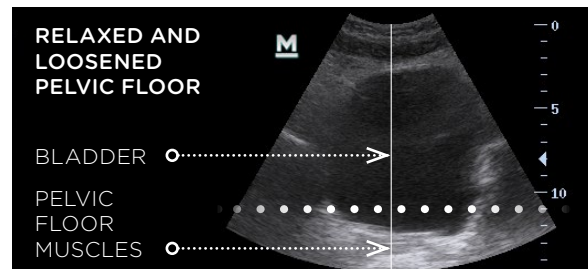
BTL EMSELLA™

A Breakthrough
Treatment for Incontinence

BACKED BY SCIENCE

Scientific research has shown that **95%** of treated patients reported **significant improvement** in their **quality of life**.*

A frontal view of the **pelvic floor muscles and bladder** using ultrasound imaging.



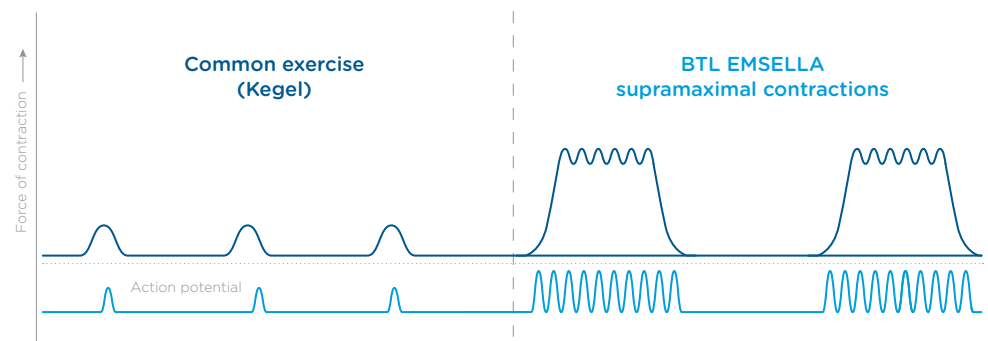
FULLY FOCUSED ON INCONTINENCE

BTL EMSELLA utilizes **High-Intensity Focused Electromagnetic technology** (HIFEM) to cause **deep pelvic floor muscles stimulation** and restoration of the neuromuscular control.

Key effectiveness is based on focused electromagnetic energy, in-depth penetration and stimulation of the **entire pelvic floor area**.

A single BTL EMSELLA session brings **thousands of supramaximal pelvic floor muscle contractions**, which are extremely important in muscle re-education of incontinent patients.

Myogram



TECHNOLOGY THAT WORKS FOR YOU



"We place all our stress incontinence and overactive bladder patients on this chair. They are loving the 28-minute treatments. It is so easy sitting fully clothed on the chair, reading a magazine, and getting a full pelvic workout as if you had a private pelvic floor trainer beside you without the sweat!"

Red Alinsod, M.D.
Alinsod Institute for Aesthetic
Vulvovaginal Surgery



"I have never seen anything quite as innovative as the BTL EMSELLA for the treatment of incontinence. After treating and observing 20 different women with both urge and stress and mixed forms of incontinence I was pleasantly surprised and happy to see the relief my patients obtained from this therapy."

Joseph Berenholz, M.D.
Diplomate American Board
of Obstetrics and Gynecology



"The results have been really rewarding. There are many patients who really call this a life-changing experience. When we treat the patients with EMSELLA, whether we are doing a RF treatment in conjunction or laser treatment in conjunction, one of the things I am most impressed with as a provider is how much their lives are changed."

Julene B. Samuels, M.D.
Julene B. Samuels, MD, FACS
Louisville, KY

*HIFEM Technology Can Improve Quality of Life of Incontinent Patients, Berenholz J., MD, Sims T., MD, Botros G., MD, Individual results may vary. **Once the therapy is started, there is no need for an additional operator activity. ©2017 BTL Group of Companies. All rights reserved. This document includes registered and/or unregistered U.S. or foreign trademarks. The products, the methods of manufacture or the use may be subject to one or more U.S. or foreign patents or pending applications.

